

CERTIFICATE OF LOCATION OF GOVERNMENT CORNER

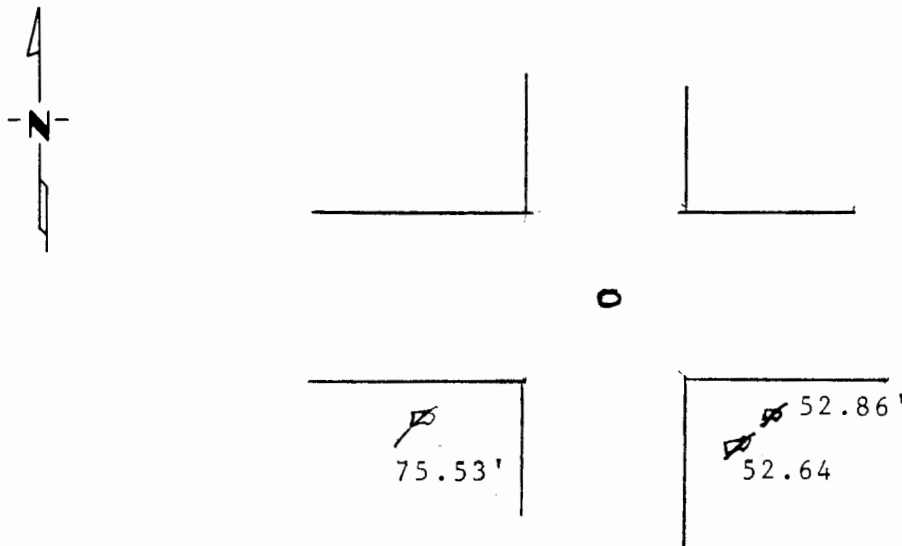
Northeast Corner of Section 26, Township 106, Range 43, 15th P.M.

STATE OF MINNESOTA, County of Murray

At the corner location shown on the sketch:

- On _____ found a _____
DATE
- left monument as found, lowered monument, removed monument (explain)
- On June 3, 1996 placed a 1" iron pipe w/seal #11943 (SEE BACK)
DATE

SKETCH OF REFERENCE TIES



Nail & seal in power pole SW 75.53'
 Nail & seal in power pole SE 52.86'
 Nail & seal in power pole seSE 52.64'

Statement of evidence relative to this corner location is on back of page.

I hereby certify that this document and the data contained herein was prepared by me or under my direct supervision.

Ayle C. Moser 6-10-96
SIGNATURE DATE

Registration No. 11943
 Land Surveyor, Professional Engineer
 County Surveyor, County Engineer

OFFICE OF THE COUNTY RECORDER

County of _____

I hereby certify that this document was filed in the Co. Recorders office at _____ .M. on the _____ day of _____ A.D., 19 _____

County Recorder _____

By _____, Deputy

DOCUMENT NO. _____

Statement of Evidence:

On June 3, 1996. Moseng Land Surveying, Inc., dug with a back hoe in the center of intersection and found nothing. The hole was 6'x7' and 5' deep. Set a 1" iron pipe w/seal #11943 by occupational lines.